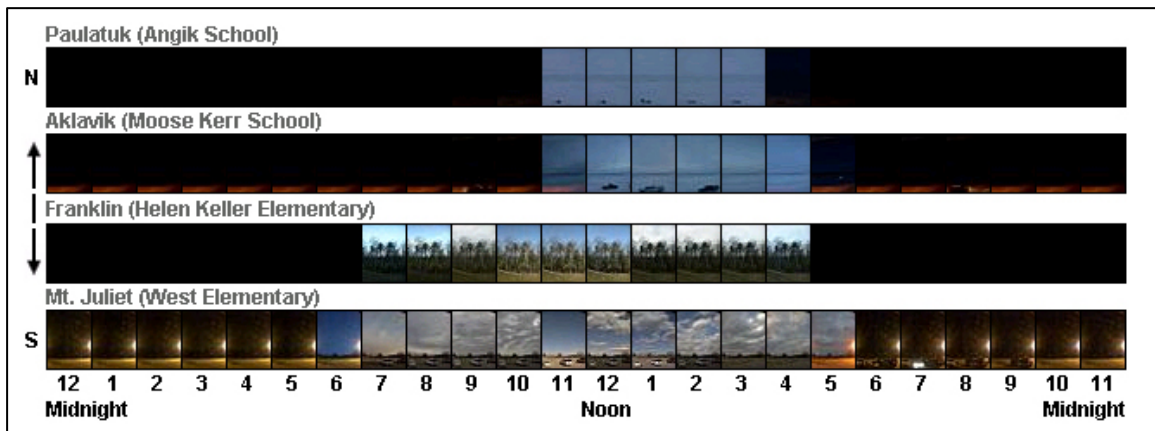


How long is the Day? Counting Day Light Hours

The images below show every hour of a day so that you may see when it is light and dark in each town. The images were collected using web cameras at each school.

1. On December 1, 2005 students at each of the 4 schools had a different amount of day light. Count the hours of day light at each school.



- Paulatuk, Northwest Territories Canada _____
- Aklavik, Northwest Territories Canada _____
- Franklin, Massachusetts United States _____
- Mt. Juliet, Tennessee United States _____

2. The schools located in Paulatuk, NT and Aklavik, NT are above the Arctic Circle in a polar region, the schools in Franklin, MA and Mt. Juliet, TN are located in a temperate region and the school in Hilo, HI is located in a tropical region. In mid May, how many hours of daylight did each region have?

Angik School (Paulatuk, NWT, Canada)



Moose Kerr School (Aklavik, NWT, Canada)



Helen Keller Elementary (Franklin, MA, United States)



West Elementary (Mt. Juliet, TN, United States)



Waiakeawaena School (Hilo, HI, United States)



12 1 2 3 4 5 6 7 8 9 10 11 12 1 2 3 4 5 6 7 8 9 10 11
 Midnight Noon Midnight

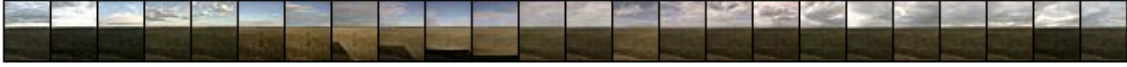
Polar Region (Paulatuk and Aklavik, NT CA) _____

Temperate Region (Franklin, MA and Mt. Juliet, TN) _____

Tropical Region (Hilo, HI) _____

3. On June 21, 2006, the summer solstice, which is the longest day of the year, how many hours of light did each school have?

Angik School (Paulatuk, NWT, Canada)



Moose Kerr School (Aklavik, NWT, Canada)



Helen Keller Elementary (Franklin, MA, United States)



West Elementary (Mt. Juliet, TN, United States)



Waiakeawaena School (Hilo, HI, United States)



12 1 2 3 4 5 6 7 8 9 10 11 12 1 2 3 4 5 6 7 8 9 10 11
Midnight Noon Midnight

Angik School (Paulatuk, NWT, CA) _____

Moose Kerr School (Aklavik, NWT, CA) _____

Helen Keller Elementary School (Franklin, MA, USA) _____

West Elementary School (Mt. Juliet, TN, USA) _____

Waiakeawaena School (Hilo, HI, USA) _____