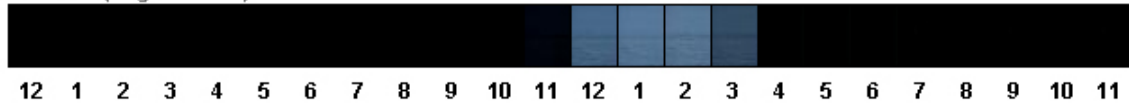


What fraction of the day is light?

Everywhere on earth a day is 24 h long but the portion or fraction of the day that is light varies with latitude. In Polar Regions, light varies the most. What fraction of the day is light for the students in Paulatuk, Northwest Territories Canada?

December

Paulatuk (Angik School)



Fraction of the day that is light? _____

January

Early in the month

Paulatuk (Angik School)



Fraction of the day that is light? _____

Late in the month

Paulatuk (Angik School)



Fraction of the day that is light? _____

February

Paulatuk (Angik School)



What fraction of the day is light? _____

March

Paulatuk (Angik School)



What fraction of the day is light? _____

April

Paulatuk (Angik School)



What fraction of the day is light? _____

May

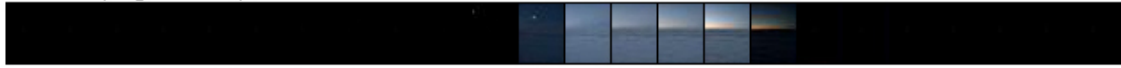
Paulatuk (Angik School)



What fraction of the day is light? _____

On January 1, 2004 what fraction of the day was light in Paulatuk, NT Canada and what fraction of the day was light in Franklin, MA United States?

Paulatuk (Angik School)



Franklin (Helen Keller Elementary)



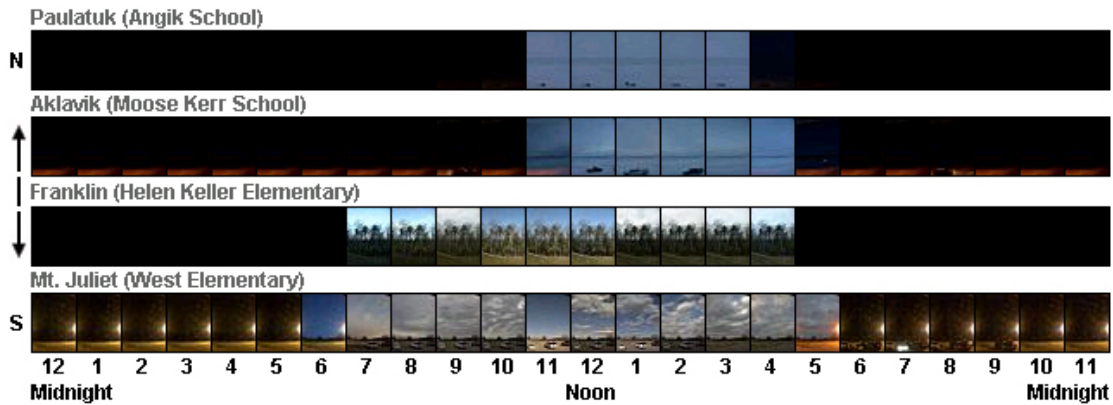
12 1 2 3 4 5 6 7 8 9 10 11 12 1 2 3 4 5 6 7 8 9 10 11
Midnight Noon Midnight

Write the fraction in two equivalent forms.

Paulatuk _____

Franklin _____

On December 1, 2005 students at each of the 4 school that are part of the Windows Around the World program had a different amount of daylight. Write what fraction of the day was light for each school.



Paulatuk _____

Aklavik _____

Franklin _____

Mt. Juliet _____

Which of the schools had a quarter and half of their day as day light?

How much more light did Franklin have than Paulatuk ?
