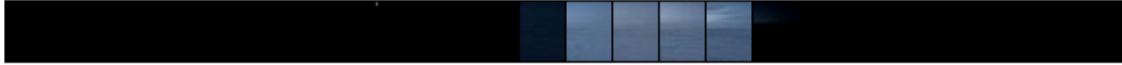


## How much longer is the day?

Use the images below to write number sentences and to calculate the answers to the questions.

1. On Christmas day 2004, Franklin, MA USA had how many more hours of light than Paulatuk, NT Canada?

Paulatuk (Angik School)



Franklin (Helen Keller Elementary)



12 1 2 3 4 5 6 7 8 9 10 11 12 1 2 3 4 5 6 7 8 9 10 11  
Midnight Noon Midnight

Answer: \_\_\_\_\_

2. On the last day of school in Aklavik, NT Canada and in Franklin, MA USA, how many more hours of light did the school in Aklavik have?

Moose Kerr School (Aklavik, NWT, Canada)



Helen Keller Elementary (Franklin, MA, United States)



Answer: \_\_\_\_\_

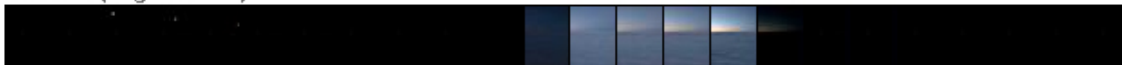
3. How many hours of light did Paulatuk, NT Canada lose between the summer solstice and the winter solstice?

Paulatuk (Angik School) Summer Solstice



12 1 2 3 4 5 6 7 8 9 10 11 12 1 2 3 4 5 6 7 8 9 10 11  
Midnight Noon Midnight

Paulatuk (Angik School) Winter Solstice



12 1 2 3 4 5 6 7 8 9 10 11 12 1 2 3 4 5 6 7 8 9 10 11  
Midnight Noon Midnight

Answer: \_\_\_\_\_